

Week 8 Update

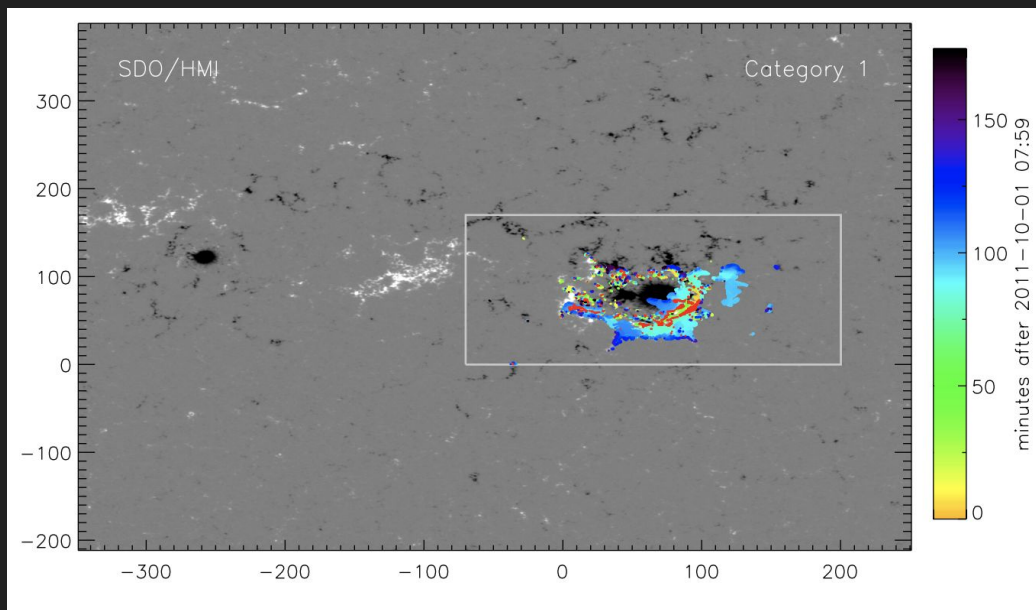
Zoe Schlossnagle & Dr. Chunming Zhu

Background

- Solar flare precursor events
 - Specifically three events that fall into three different categories
- Looking at the early bursts before the flare itself

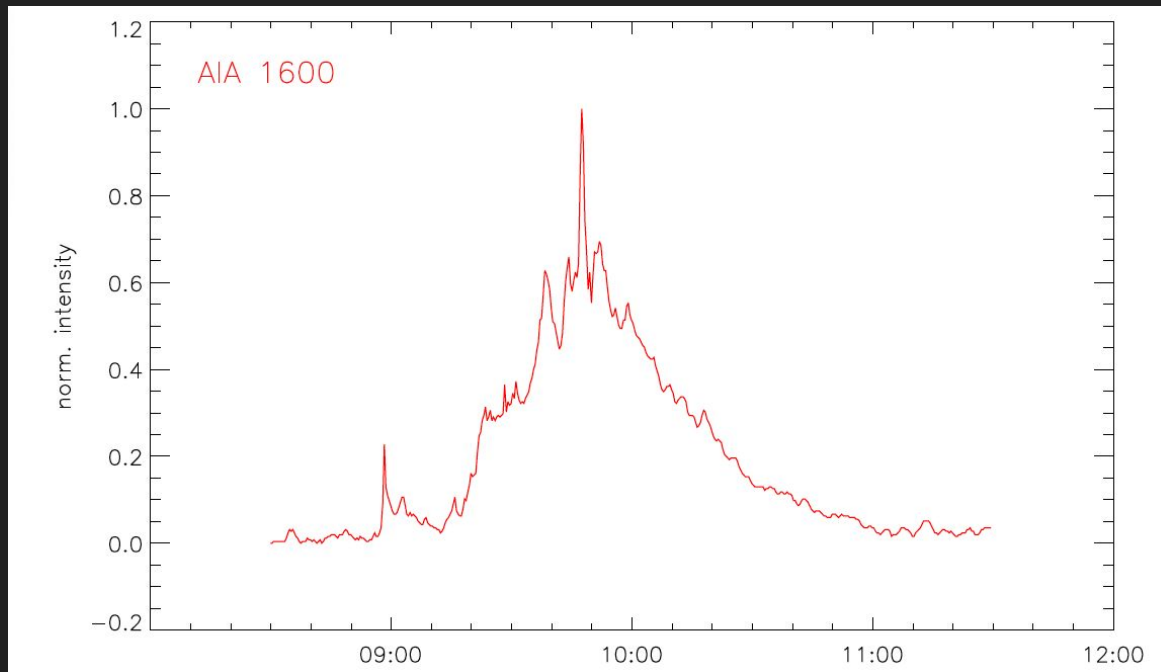
Last time

- Magnetic field extrapolation and time-modeling of the flares vs the early bursts



Peak Intensity Plot 10/01/2011

Ratio of about 0.25

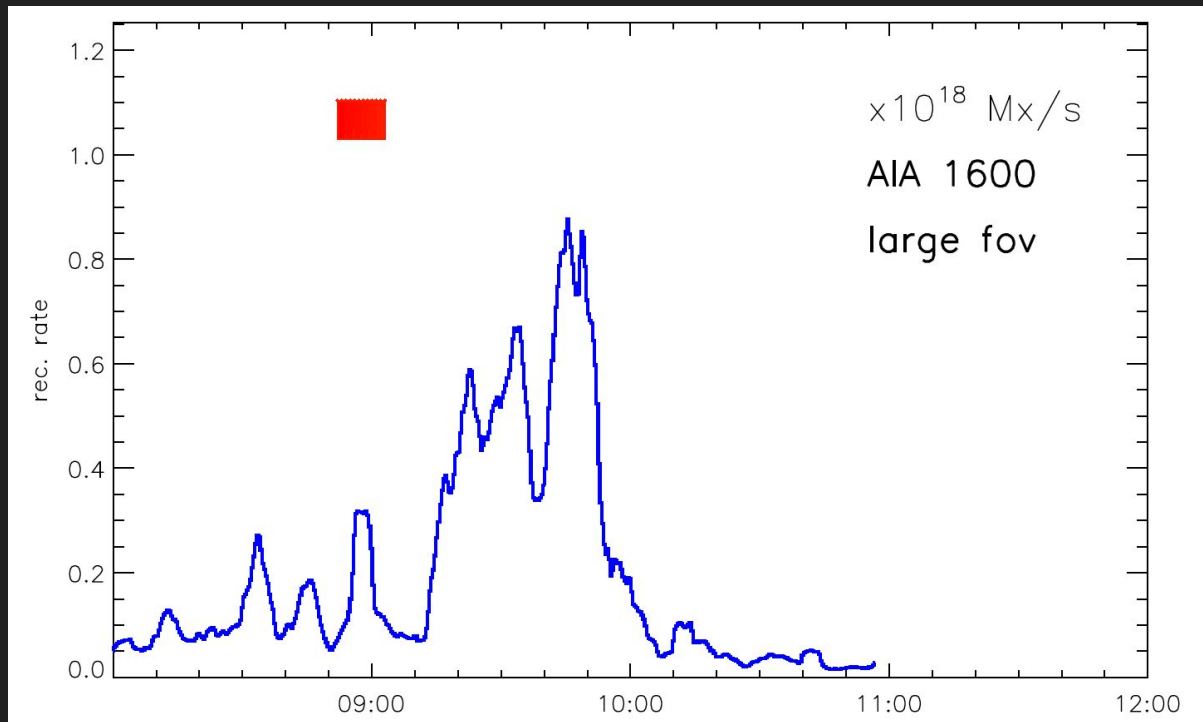


Stats! Category 1 (10/01/2011)

Duration ratio: about 0.144

Peak reconn rate ratio: 0.362

Start times are about 25 min
apart



Category 2 (06/21/2011)

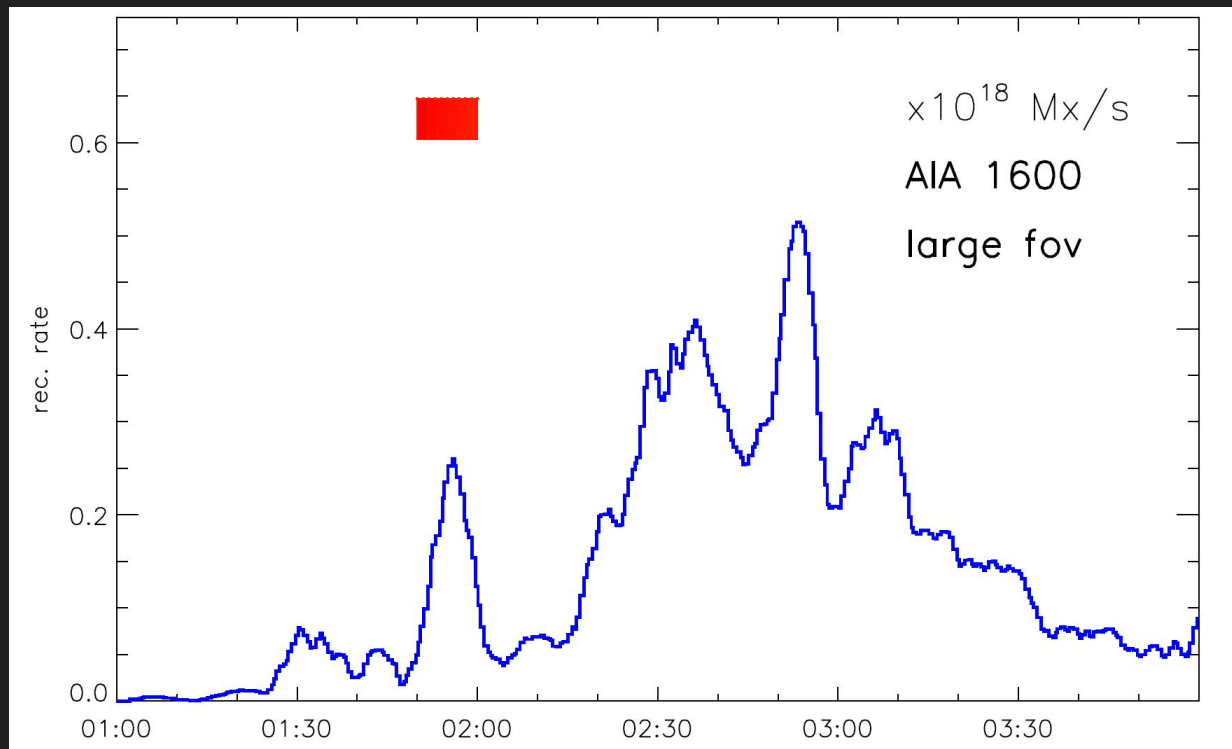
Duration ratio:

0.17

Peak reconn rate ratio:

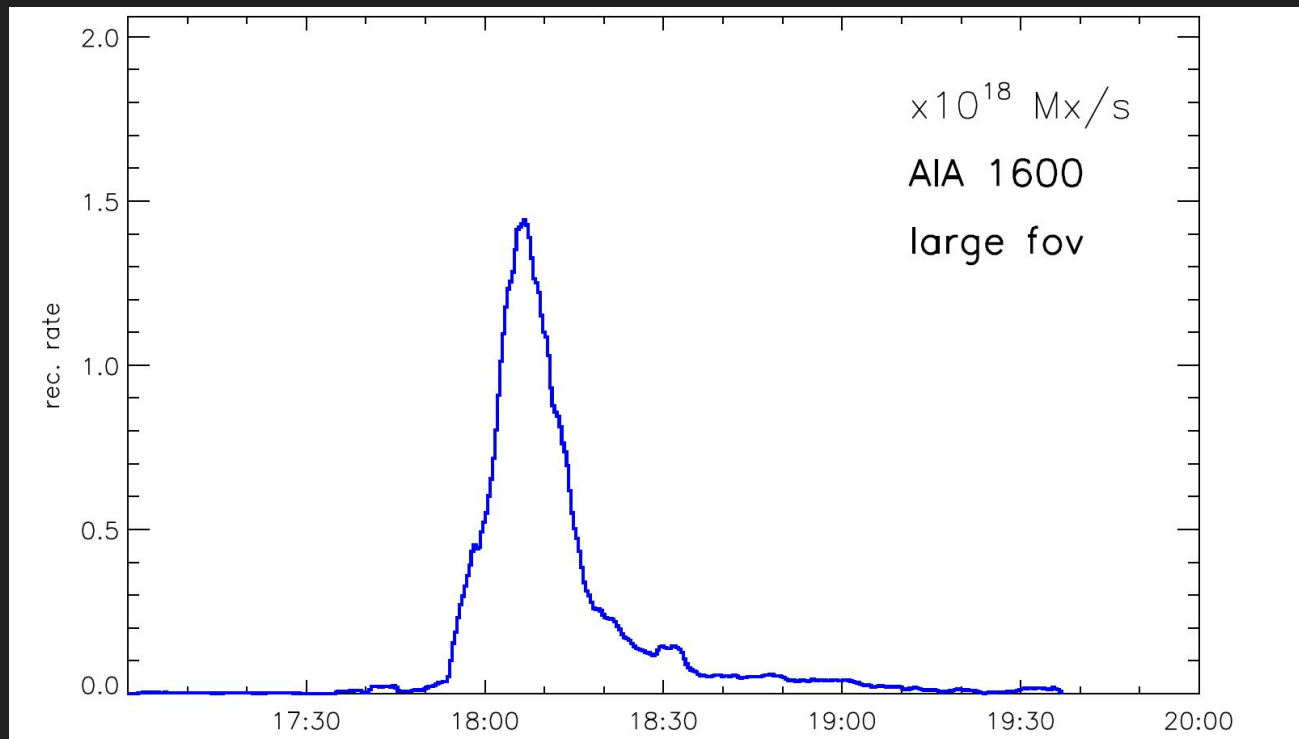
0.506

Start times are about 34
min apart



Category 3 (08/07/2010)

No early brightening,
so just the flare is
present



Next

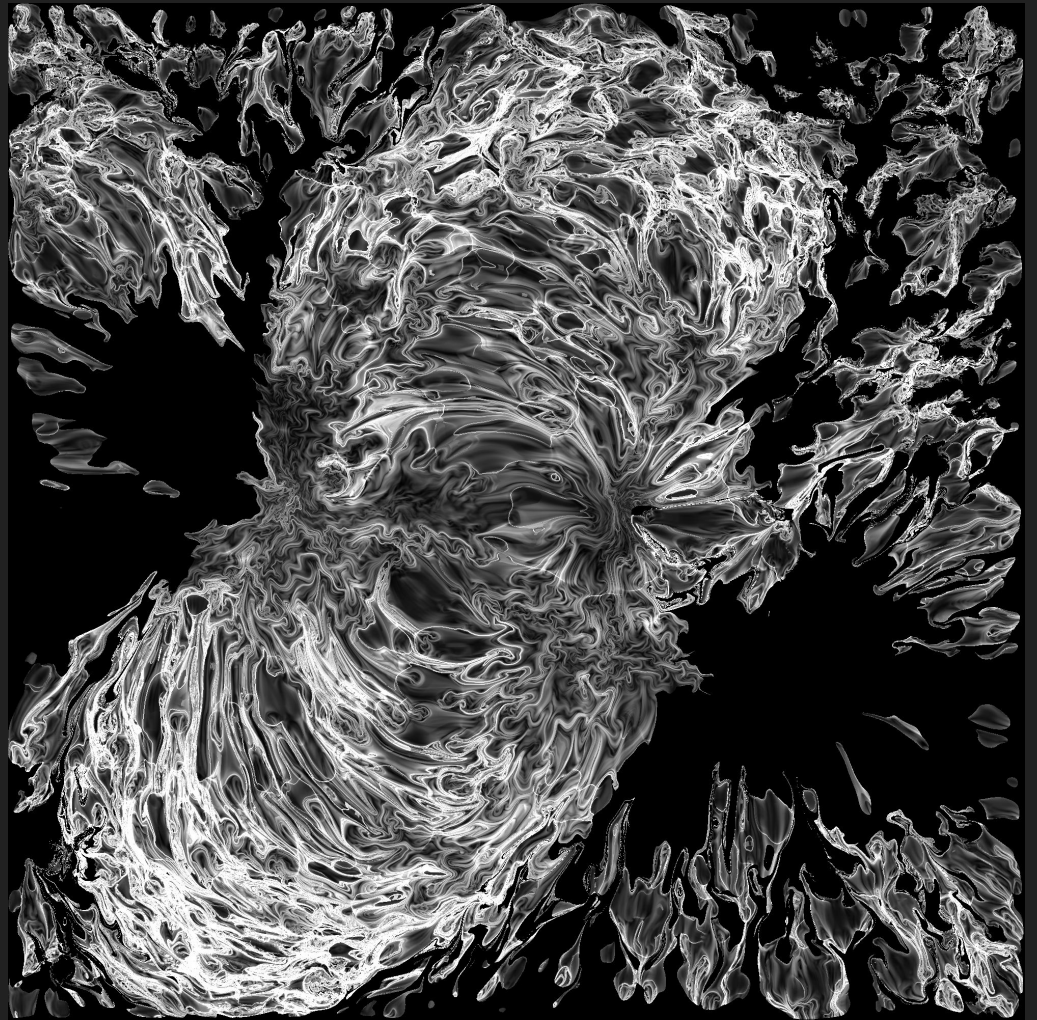
QSL code and evaluation

- Mapping reconnection geography on the surface by Q factor

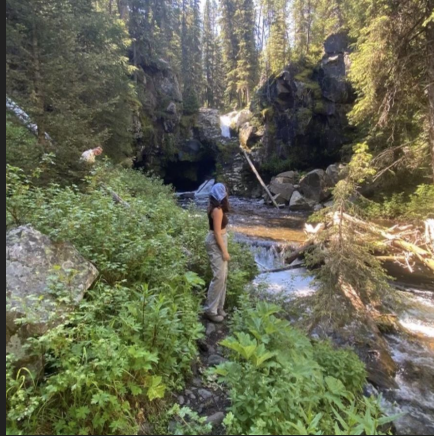
Preview of next week...

Model of Q factor for
2011/06/21

I don't know much about this
yet but look at that!



Shoutout Prof Filwett!



Hyalite Lake!

Thanks!